



# **ENERGY & WATER MANAGEMENT**

POWER PLANTS – WIND PARKS





FROM REPAIRING OVERHEAD LINES AFTER A STORM TO ROUTINE MAINTENANCE OF THE POWER DISTRIBUTION SYSTEM – THE **HOISTS, LIFTING ATTACHMENTS, AND MOTION CONTROL PRODUCTS** FROM COLUMBUS MCKINNON ARE **INDISPENSABLE AIDS**. WITH OVER 150 YEARS OF INDUSTRY EXPERIENCE, WE OFFER A WIDE RANGE OF PRODUCTS SPECIFICALLY TAILORED TO THE NEEDS OF UTILITY COMPANIES.



Our product portfolio is designed for **safety and efficiency**, making it easier for utility professionals to perform reliable work even in the most hazardous environments. Applications such as hydroelectric power plants, pumped-storage power plants, coal mills, and turbine houses **benefit from our high-quality components**, precisely meeting your individual spec-

ifications. As we embark on this journey together, we invite you to explore how our diverse array of solutions can **empower your operations** and drive **sustainable growth** in the ever-evolving energy industry. Let's navigate the future of energy together, one innovative solution at a time.

Find out how our brands and their products interlock seamlessly and complement each other. The products are just a selection of intelligent motion solutions and are intended to give you an understand-

ing of our broad portfolio. Our products are designed to meet these challenges and offer you optimum performance, safety and reliability.



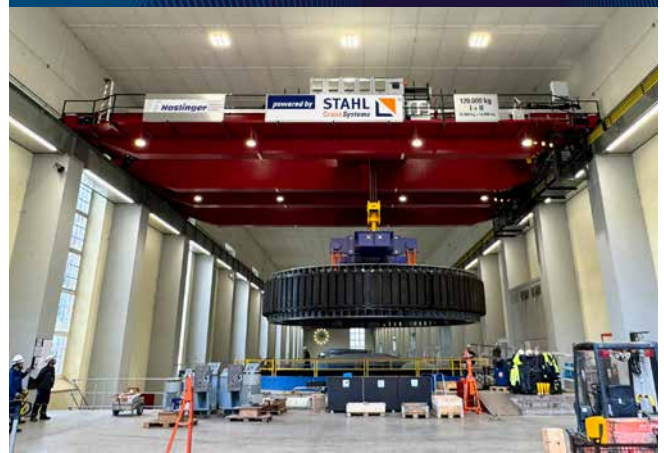
# LIFTING SOLUTIONS

**STAHL CRANESYSTEMS** IS RENOWNED FOR ITS DEPENDABLE AND SECURE HOISTS AND CRANE PARTS, ALONGSIDE SYSTEMATIC ENGINEERING SOLUTIONS. THESE OFFERINGS CATER TO VARIOUS INDUSTRIES, FROM STANDARD TO SPECIALIZED AND EXPLOSION-PROOF HOISTS AND CRANE TECHNOLOGY. STAHL CRANESYSTEMS IS ALSO A GLOBALLY RECOGNIZED BRAND IN THE ENERGY SECTOR AND COMPRISES ONE OF THE MOST EXTENSIVE, SEAMLESS PRODUCT PORTFOLIOS.

HYDROELECTRIC POWER STATION



HYDROELECTRIC POWER STATION



To ensure continuous operation of the power plant's turbine generators, which are meant to generate a total of 330 megawatts of electricity, it is vital to ensure a continuous flow of water. The plan to guarantee this: dam the Kishanganga River. STAHL CraneSystems developed and delivered a winch system to lower the 100 ton sluice.

The demands on the hoist were high as it had to work reliably in the adverse environmental conditions of the mountainous region. The solution was a stationary SHW 8 winch with a safe working load of 2 x 60,000 kg consisting of two rope drums and a gearbox. To ensure equal weight distribution, the hoist was designed in reeving of 2 x 12/2-1 and the drum manufactured in a length of L4.

The major modernization project of the crane system in a hydroelectric power plant was successfully implemented with the help of CraneKits from STAHL CraneSystems. A particular advantage of the STAHL CraneKit is its flexibility, which allows it to be easily adapted to the specific requirements of the respective application. In terms of mechanics and control technology, the new cranes are an absolutely special solution. The new crane is used for many heavy-duty transports in the hydropower plant, including lifting out the rotors weighing 220 tons for maintenance work without dismantling the poles.

The rotors in the generators have to be lifted out at certain intervals for inspection and maintenance work, for example to check bearings, windings and other components, correct imbalances and check thermally stressed insulation for damage and ageing. Cleaning work is also required, as dirt and oil residue can accumulate between the rotor and stator, which must be removed in order to achieve optimum performance.



## OFFSHORE WIND PARK



Davits are special jib cranes with inclinable cantilever arms, primarily used on ships to lower lifeboats and heavy anchors. The new davit crane was **developed specifically for offshore wind turbines**. Mounted just a few metres above the water, it serves to lift tools and spare parts from the ship on to the wind turbine's platform during maintenance and repair work.

These innovative davit cranes are engineered to **withstand harsh marine environments, ensuring durability and reliability**. The cranes are equipped with advanced safety features, such as overload protection and emergency stop functions, to **enhance operational safety**. Additionally, they are designed for easy installation and maintenance, **minimizing downtime and operational costs**.

48 cranes operate in the **Westermeerwind wind farm on the IJsselmeer, Netherlands**.

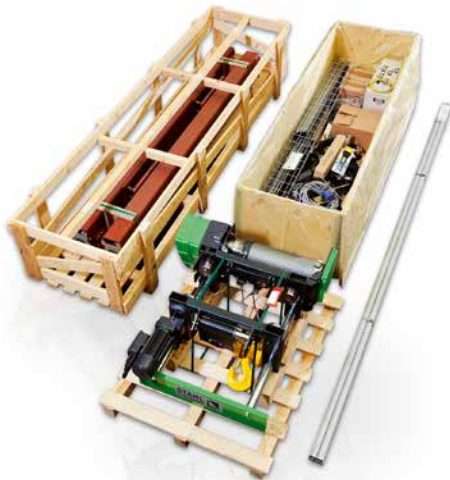
## WASTEWATER TREATMENT PLANT



The **Feldkirch wastewater association** was faced with the challenge of **modernizing** its ageing excess sludge and sewage sludge dewatering system. A key element was implementing a compact, efficient **custom lifting system**.

Together with our partner, we developed a special design of a **single-girder suspension crane** for this special application in order to maximize the lifting height. The hoist used was a so-called **extra short headroom trolley** in the form of a **CraneKit** from STAHL CraneSystems. Mounted directly on the ceiling, the crane runway **takes up very little space**. **The patented design of the hoist reduces the overall height by 60 %** and enables exceptional lifting heights. The even lifting of the load due to the absolute **synchronization** of the chain strands is unique in terms of design. The hook traverse can be infinitely adjusted depending on the flange width.

# CASE STUDY PRODUCTS



## CRANEKITS

CraneKits with chain hoists and wire rope hoists offer crane builders around the world the possibility to execute orders economically with manageable planning costs. **Customer service, planning, construction of the system** as well as service and the **provision of spare parts** are carried out **by competent local crane builders**. The **intuitive, structured planning software** with continuously updated database enables **easy configuration** of the crane system. STAHL CraneSystems manufactures the hoists, components and other equipment to a high standard of quality and tests the modules for hoisting, travel and control technology exhaustively.



## CHAIN HOISTS

The chain hoist program is **robust and reliable** and **requires little maintenance**. With **13 S.W.L. ranges** from **125 kg to 6,300 kg**, three construction types and various suspensions, the ST model series permits **countless possible combinations**. The innovative and pioneering design of the chain hoist offers considerable **economic advantages** and is especially suitable for **rugged use**. The STF chain hoists variant is equipped with **frequency inverters from Magnetek** as standard. This ensures precise, **stepless lifting and travel** with reliable feedback. The chain hoist are also available as **short headroom trolley** and **extra short headroom trolley** is reduced by **33 %** and over **60 %** respectively.

## FEATURES & BENEFITS

- Effective and economical
- Intuitive, structured software
- Up-to-date database
- Optional support by engineering team or factory service centre



All products are optionally available in explosion-proof design according to ATEX or IECEx

## FEATURES & BENEFITS

- Suspension directly from the chain guide of solid cast iron
- Easy inspection and maintenance of the chain drive due to the overmounted drive shaft.
- Extremely short and compact construction ensures that space can be utilized to the maximum
- High ISO classification according to FEM/ISO standards
- Modern Kanban production, available with short lead time



## WIRE ROPE HOISTS

The wire rope hoists are manufactured in systematic **modular design** and dimensioned for a safe working load range from 500 kg to 125,000 kg. We offer our versatile **SH series** in five frame sizes with 26 S.W.L. variants for the safe working load range from **500 kg to 32,000 kg**. The upper safe working load range to **125,000 kg** is covered by the field-proven **AS series**. These wire rope hoists can be used for stationary hoisting or together with a trolley for use in standard and custom cranes as well as system manufacturing. **Off-standard applications** and customised solutions can be achieved cost-effectively thanks to the modular design of the standard components of all wire rope hoists.



## WINCHES

The SHW 8 winch programme is **based on the SH wire rope hoist programme** and is specifically designed for loads of **up to 250,000 kg**. With **powerful hoist motors** and a **robust, low-maintenance design**, it is suitable for tough everyday working conditions. The **compact design** is made possible by a small number of rope reeving points. All travel drives are equipped with **soft start as standard**. The winch is optionally available with a frequency inverter or customised speeds.

### FEATURES & BENEFITS

- Stationary design or different trolleys for cranes and systems applications
- Standard high-quality safety components for increased safety at work
- Largely maintenance-free, low wear and long service life according to FEM/ISO standards
- Equipped as standard with two hoisting and travel speeds
- Very smooth starting and braking characteristics

### FEATURES & BENEFITS

- Series components of the SH series proven thousands of times over
- 3 hoist motors up to 38 kW with two speeds in a ratio of 1:6
- 6 hoist motors up to 200 kW and stepless speed control
- All travel drives with soft start
- Overload protection is already pre-set during manufacture
- Compact headroom thanks to innovative design of the rope drive

# CASE STUDY PRODUCTS



## ENDCARRIAGES & WHEEL BLOCKS

The robust crane endcarriages are manufactured in modern series production. They are easy to mount on both suspension cranes (underslung cranes) and bridge cranes. The wheels, made of high-quality spheroidal graphite cast iron with self-lubrication, come in various diameters.

The SR wheel block programme is used in crane, trolley and systems building as well as in custom applications & special constructions. The SR wheel block comes in six different sizes for wheel loads from 5,000 kg to 30,000 kg.

## CRANE ELECTRICS

The crane electrics include cable power supplies, conductor rails and energy chains for the power supply. Control units, radio remote controls and frequency inverters are available for all hoists. Standard contactor controls for all common control voltages in crane systems with components from STAHL CraneSystems. In the basic version, the components are supplied with plug-in connections where possible.

### FEATURES & BENEFITS

End Carriages for bridge & suspension cranes

- Impellers made of high-quality spherical graphite casting with self-lubrication
- Low-noise impeller drive

SR wheel block

- Three standard configurations for connection to on-site structures
- Low-maintenance direct drive with two travel speed

### FEATURES & BENEFITS

- Robust control pendant with Emergency Stop palm button and control cable
- All switching elements for hoist, cross, and long travel are 2-step
- IP65 protection, additional buttons



# LINEAR MOTION

THE **PF AFF-SILBERBLAU** BRAND LEADS IN DRIVE AND LIFTING TECHNOLOGY WITH INNOVATIVE COMPLETE SOLUTIONS RANGING FROM SPINDLE LIFTING ELEMENTS TO ELECTROMECHANICAL COMPONENTS OF **LINEAR DRIVE TECHNOLOGY** OR SPECIALIZED WINCHES. WITH THIS UNIQUE PORTFOLIO OF LIFTING MECHANISMS, CUSTOMERS CAN COMBINE COMPONENTS AND SOLUTIONS ACCORDING TO THEIR NEEDS IN THE ENERGY INDUSTRY.

GAS PRODUCTION



Columbus McKinnon developed an **ATEX-compliant special solution for filter change in natural gas production**. The wire rope winches and lifting elements from Pfaff-silberblau used in the **Saudi Arabian** natural gas refinery comply with the stringent category 2 requirements of the **ATEX Directives 94/9/EC and 99/92/EC**, which also govern equipment used for lifting, lowering, pushing and compressing loads in plant engineering, navigation, sewage treatment plants, chemical industry etc.

This involves the use of 19 specially designed trolleys in three different sizes and eight gantry cranes. This extremely **heavy-duty special solution** is capable of withstanding temperatures of up to 50°C, sand and dust and even the explosive environment.



DISCOVER  
OUR  
PORTFOLIO

ELECTRON TEST BENCH



Here, the **Pfaff-silberblau lifting column PHOENIX** takes over the **height adjustment** when guiding a photon beam to experimental stations (beamlines) as **sensitively** as possible and backlash-free in order to guide the photon beam precisely through narrow apertures. The telescopic lifting column should therefore be as stable as possible and the telescopic guide free of side play. Due to its **technical design**, Pfaff-silberblau's PHOENIX telescopic lifting column was able to meet the **high demands of scientists** in the standard version so well that no additional design effort was required for the **height adjustment**.

At the laboratory site, scientists conduct research into complex material systems. They operate and use the **photon source BESSY II**, a synchrotron that delivers **brilliant photon pulses**. Experimental stations are connected to 48 beam holes. At one of these beamlines, researchers from the Max Planck Society investigate electrochemical processes in complex material systems under realistic conditions.

## BIOGAS



Pfaff Silberblau winches are the ideal solution for biogas applications. With their robust construction and reliable performance, these winches ensure efficient operation in the demanding conditions of biogas plants.

The winches are used to adjust the height of agitators, ensuring optimal mixing and homogenization of the substrate for efficient production. The winch allows the agitator to be moved up and down, adjusting to the fill level of the pit. For that matter, the special SW-K-LB winches are associated with adjustable height agitators for fermenters, secondary fermenters and storages. Agitators are used to provide optimal distribution of the temperature and nutrients within digesters.

## WIND TOWER



The wind industry is one of the most important industries for the production of renewable energy. To ensure efficient and safe wind energy production, innovative and qualitative motion solutions are required that meet the specific requirements of this industry. In this example, our MERKUR opens and closes the maintenance hatches for wind turbines (storm)safely.

Our MERKUR is our series for basic worm gear screw jacks in the load range from 0.25 t to 50 t. Available in nine different sizes, it can handle lifting forces from 5 to 500 kN. The series in cubic housing design allows machining on all sides and therefore easy alignment of the screw jacks during installation.

# CASE STUDY PRODUCTS



## HSE SCREW JACK

The HSE high-performance screw jacks have been specially developed for dynamic use at **low and medium lifting speeds** and an increased duty cycle. The **spherical graphite iron housing** with cast cooling fins is designed to ensure a **high level of heat dissipation** into the environment.



## PHOENIX TELESCOPIC LIFTING COLUMN

This economical system **combines screw jack and guiding in one**. The possibility to take up **eccentric forces** as well, is the characteristic of the PHOENIX lifting column. The **compact design** facilitates an extensive possible field of application. PHOENIX lifting columns are used **multi-purposely** in the mechanical engineering, the aerospace as well as the pharmaceutical industry.

### FEATURES & BENEFITS

- 8 different sizes
- Lifting forces from 5 to 1000 kN
- Drive speed up to 3000 min<sup>-1</sup>
- Self-locking trapezoidal screw
- Separate lubrication circuits:
- Worm gear in two gear ratios (normal "N" and slow "L")
- Patented gear design with distributed heat zones
- Case-hardened and ground worm shaft

### FEATURES & BENEFITS

- Design according to your customer needs (lift, head plate, driving motor, IP protection class IP54 or 55 – other protection classes on request ...)
- Eccentric loads (outreach) permitted
- Guiding and screw jack in one, thus external guides can be omitted
- Sectional tubes made of anodised aluminium
- Vertical and horizontal application possible
- Pressure and tensile load permitted



## SW-K-LB WIRE ROPE WINCH

The rope winch SW-K-LB, originally developed as a vehicle winch, is now used to **lift and pull** many different loads. It is available in two designs, **galvanized and stainless steel**.

For a better **guiding of the rope** to the suspension point we recommend the **use of sheaves** or sheave blocks, please ask us.



## MERKUR SCREW JACK

**Basic screw jack** for slow and medium lifting speeds. The MERKUR series has a **cubic design** and the machining on all sides makes it easy to align the gear-boxes during installation. MERKUR screw jacks are used where loads have to be positioned with **moderate duty cycles and low dynamics**.

### FEATURES & BENEFITS

- Light weight robust stamped steel housing
- Spur gear drive for optimal efficiency and comfortable handling
- Automatic load pressure brake for safe holding of the load in any position. An unintentional brake release is prevented
- All parts are zinc-plated for increased corrosion protection, drum with additional special coating
- Easy and quick mounting to consoles, even under lifting conditions
- Stainless steel version (material 1.4301) for increased corrosion protection

### FEATURES & BENEFITS

- 9 different sizes
- Lifting forces from 5 to 500 kN
- Drive speed up to 1500 min<sup>-1</sup>
- Self-locking trapezoidal screw
- Grease-lubricated design
- Worm gear in two gear ratios (normal "N" and slow "L")
- Machining on all sides enables easy alignment
- Identical to standard European versions

# FURTHER PRODUCTS

---



## SW-K LAMBDA CONSOLE MOUNTED WIRE ROPE WINCH

The console-mounted wire rope SW-K LAMBDA DGVV V17/18 (BGV C1) was developed for universal applications. The **attached safety crank** with two independently acting **spring brakes** for a **secure hold of the load** in any position.

- Capacity 300 kg
- Grooved drum for single-layer winding of the rope
- Spur gear drive for optimal efficiency and comfort



## WALL-MOUNTED CABLE WINCH SW-W-SGO

The wall-mounted cable winch with **worm gear** and **load pressure brake** for heavy loads. The winch has a **special load** and **fast gear** for lifting small loads quickly. The advantages are less effort when lifting and **quick winding** of the rope (for models with a load capacity from 2,000 kg).

- Low-wear rope run, rope groove is precisely turned to match the rope
- Variable rope and pulley diameters from 80 to 490 mm, with ball bearings as standard



## BETA-EX WIRE ROPE WINCH

The BETA EX electric wire rope winch models are built for special applications. Including **explosive atmospheres** where mixtures of air, gases, vapors or dust are present. A matching winch for each application can be **assembled easily** with our **flexible construction kit system**.

- Capacity 320 – 7,500 kg
- High-grade surface coating
- Electrically released spring-operated disk brake (encapsulated)



powered by CADCloud

3D

Herunterladen

Direkt einfügen (Click2CAD Toolbox erforderlich)

CAD System

Abmessungen: Bauart 1

Teil 2

Kopf III

BG 75



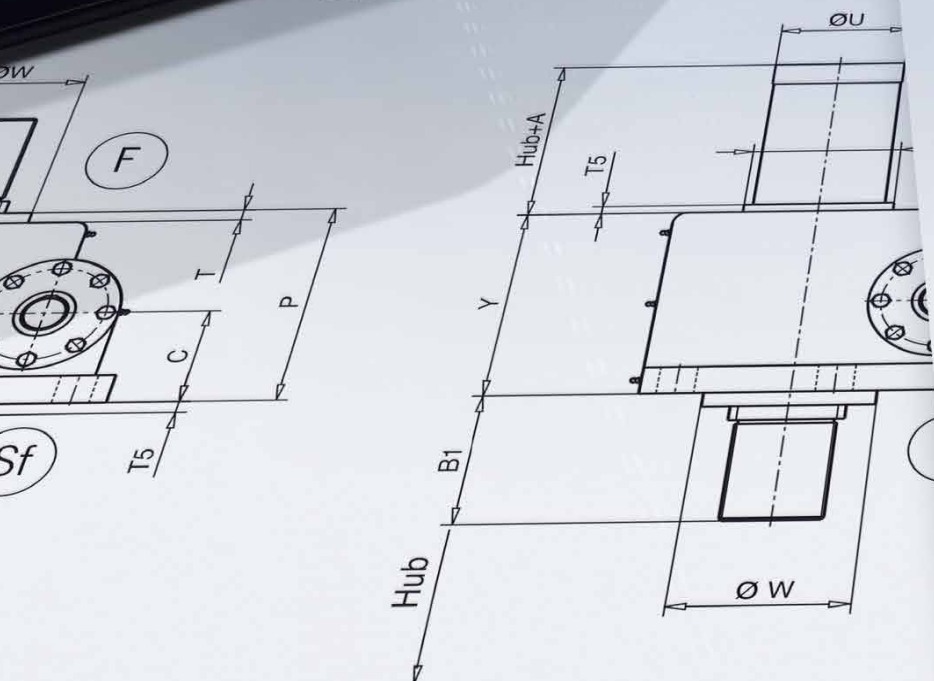
**Baureihe SHE**  
Abmessungen: Bauart 1

Abmessungen SHE: Bauart 1, Standard, Teil 1

Baugröße Spindel	0,5		1,1		3,1	
	Tr 18x6	Tr 24x5	Tr 30x6	Tr 36x5	Tr 42x5	Tr 48x5
A	20	20	20	20	20	20
B	105,5	124	150,5	150,5	150,5	150,5
B1	35,5	54	45	45	45	45
C	32	35	165	165	165	165
D	81,5	150	135	135	135	135
E	-	130	120	120	120	120
F	115	100	90	90	90	90
G	90	80	14	14	14	14
Ø H	9	9	16	16	16	16
Ø J k6	10	14	45,2	45,2	45,2	45,2
K 1	27	36	50	50	50	50
K 2	-	58	65	65	65	65
L	-	68	110,5	110,5	110,5	110,5
L 1	32,5	18	19	19	19	19
M	22	100	9	9	9	9
N	73	140	10	10	10	10
Ø O	120	88	9	9	9	9
P	65	79	5	5	5	5
Q	75,5	5x5x16	-	-	-	-
Ø R	3x3x20	-	-	-	-	-
S	-	-	9	9	9	9
T	5,5	40	24	24	24	24
Ø U	29	13	3	3	3	3
V	10	52*	3	3	3	3
Ø W	36	79	15	15	15	15
Y	70	-	-	-	-	-
<b>Kopf I</b>		18h9	15	15	15	15
Ø a k6		20	24	24	24	24
b		30	45	45	45	45
c		-	-	-	-	-
<b>Kopf II</b>		65	72	72	72	72
Ø d		45	50	50	50	50
Ø e		4xØ7	4xØ9	4xØ9	4xØ9	4xØ9
Ø f		30	45	45	45	45
g		8	10	10	10	10
r		20	25	25	25	25
s		18	3	3	3	3
Ø x		-	-	-	-	-
<b>Kopf III</b>		15	15	15	15	15
h		M 18x1,5	M	M	M	M
i		30	30	30	30	30
k		-	-	-	-	-
<b>Kopf IV</b>		20	20	20	20	20
l -0,2		50	50	50	50	50
m		30	30	30	30	30
n		15	15	15	15	15
Ø o H8		50	50	50	50	50
p1		30	30	30	30	30
Ø u		35	35	35	35	35

BG 100.1 – BG 200.1

Ausführung



# LIFTING DISTRIBUTION

**YALE** REPRESENTS ONE OF THE MOST POPULAR BRANDS IN THE MATERIAL HANDLING INDUSTRY. KNOWN FOR A **WIDE RANGE OF PRODUCTS**, THE YALE BRAND STANDS FOR TOP QUALITY AND PERFORMANCE. PRIMARILY SUPPLIED THROUGH CRANE BUILDERS AS PART OF COMPLETE OVERHEAD LIFTING SYSTEMS, YALE PRODUCTS ARE ALSO USED IN HUNDREDS OF INDUSTRIES AROUND THE GLOBE INCLUDING THE ENERGY SECTOR. IN ADDITION TO THE PREMIER LINE OF HOISTS AND ELECTRIC CHAIN HOISTS, WE ALSO PROVIDE MANUAL AND BATTERY HOISTS AS WELL AS HYDRAULIC AND LEVER TOOLS.

WATER PUMP



In this application, Columbus McKinnon supplied up-graded equipment to a customer to replace the original Steerman toe jacks that were used. Therefore, two **fifteen-tonne JH hydraulic toe jacks** were used for enabling **water pumps and engines to be easily moved** for maintenance and repair applications.

The **original Steerman toe jacks and skates** were used to move the motor, pump and frame around the site for their eventual reassembly. These **old jacks were replaced** over the years, using the new ones as of now.

CABLE CONSTRUCTION



The **YaleERGO360® UT** is our safest hand lever hoist with our **patented safety gear**. The automatically acting safety gear, increases the safety of use. The **ergonomic** and **safety enhancing design** of the device and the revolutionary, hand lever enable **efficient work at any angle**, for lifting and pulling applications. As seen above, the hoist is used for tensioning conductor cables before the insulators are installed.

The **automatic safety gear** prevents the load from falling suddenly or slipping of the cables or chain by safely arresting it after just 25–50 mm. This safety function is active both while the hoist is in use and during inactive phases without operator intervention. This **ensures permanent monitoring** even for long periods, e.g. after interruptions of work or overnight. This safety gear can be seen as the **belt that safely prevents the load from passing through**. If you also use our chain stopper, which has been tested for this application, it acts as a suspender.



LEARN  
MORE  
NOW



## JH UNIVERSAL JACKS

The Yale JH Universal Jacks are robust and versatile tools designed for workshops, construction sites, and industrial environments. They offer **high load capacity, durability, and ease of use**, making them indispensable for lifting, pushing, moving, and supporting heavy loads. These jacks feature a robust, long-life design, a pressure relief valve, and precise controlled lowering for **maximum safety and reliability**. Trust in the quality and reliability of Yale JH Universal Jacks to handle any lifting task with ease and safety.

### FEATURES & BENEFITS

- Additional screw extension of the piston (up to 20 t)
- Grooved saddle
- Large base plates for increased stability
- JH-50-2 with two-stage pump
- Inclusive operating lever



## YALEERGO 360<sup>®</sup> UT RATCHET LEVER HOIST

To ensure maximum safety in everyday applications, we have equipped the YaleERGO 360 UT with a **patented safety gear** that we have developed ourselves. This safety gear is designed to **intervene precisely** when the load pressure brake fails. This means that the YaleERGO 360 UT **guarantees controlled handling** and additional safety even in adverse conditions, especially in applications that are very demanding for a hoist.

### FEATURES & BENEFITS

- Hoist design allows the operator to work in a safe and ergonomic position
- Patented crank handle enables smooth 360° operation, reducing repetitive wrist action experienced with traditional ratchet lever hoists
- Double reduction gearing and high-quality bearings decrease required pull force by up to 30%, reducing operator fatigue

# ADDITIONAL EQUIPMENT

**TIGRIP® LOAD HANDLING ATTACHMENTS** HAVE BEEN A BYWORD FOR RELIABILITY, QUALITY AND SAFETY FOR OVER 35 YEARS. FOR TRANSPORT BY HOIST, WE OFFER THE OPTIMUM LOAD HANDLING ATTACHMENT FOR ALMOST EVERY APPLICATION. CMCO ALSO HAS THE RIGHT SOLUTIONS FOR **MATERIAL HANDLING AND TRANSPORT**. THE COMPREHENSIVE PRODUCT RANGE OFFERS THE RIGHT MODEL FOR A VARIETY OF APPLICATIONS, BE IT FOR **DIFFERENT ROUTE LENGTHS OR DEGREES** OF UTILIZATION, **GRADIENTS AND RAMPS** OR AREAS WITH A CORROSION HAZARD.

## BELOW THE HOOK LIFTING DEVICES



Our product portfolio includes **grabs, lifting clamps, tension clamps, transport eyes, C-hooks, spring balancers, lifting magnets, load handling equipment for civil engineering, lifting beams, crane forks and weighing equipment.** We are of course always available for further advice.

- Lifting Clamps and Wire Grips
- Permanent lifting magnets
- Lifting lugs and C-Hooks
- Spring balancers and Spreader Beams

## MATERIAL HANDLING & TRANSPORTATION



Our high-quality **stationary scissor lifting tables** give you a **competitive advantage** and **ensure efficient and safe workflows** in your company.

- Electric Pallet Trucks
- Hand Pallet Trucks
- Scissor Elevating Platform
- Electric Pendastrain Stackers

# BRAND OVERVIEW

WE ARE PROUD TO PROVIDE **WORLD-LEADING LIFTING AND CONVEYANCE SOLUTIONS**, ENSURING THAT EVERYTHING IS AS SAFE AS POSSIBLE IN CHALLENGING CONDITIONS. WITH THE DIFFERENT SOLUTIONS OF OUR BRANDS, FROM CRANE SYSTEMS TO HYDRAULICS, FROM HOISTS TO WINCHES AND SMART CONVEYANCE, WE PROVIDE COMPREHENSIVE SOLUTIONS **FOR YOUR TOUGHEST CHALLENGES**, MAKING YOUR WORK **SAFE, FAST, AND EFFICIENT**. CONTACT US AND WE FIND YOUR SOLUTION TOGETHER.



When you look for the customized and big things, our hoists, components and crane technology are the optimal solution for your individual challenges.



Provides customizable lifting technology solutions with winches, screw jacks, platforms and much more.



Get to know our battery powered chain hoist, reliable standard chain hoists, winches and hydraulic solutions for a wide range of challenges.



## A GLOBAL LEADER IN INTELLIGENT MOTION SOLUTIONS



LIFTING  
DISTRIBUTION



LIFTING  
SOLUTIONS



CONVEYANCE  
SOLUTIONS



LINEAR MOTION  
SOLUTIONS

# CMCO

**INTELLIGENT MOTION**  
Columbus McKinnon

Columbus McKinnon has a history of over 150 years and is a world leader in lifting and intelligent motion control technology. The innovative portfolio of high-quality brands, including Stahl CraneSystems, Magnetek, Pfaff-silberblau, Duff-Norton, Yale, Dorner, CM and montratec addresses the needs of our customers by enhancing safety and promoting growth and efficiency. Experience, expertise and innovation combined with a deep understanding of user needs are the formula for success that has long underpinned our portfolio of hoists, material handling equipment and lifting accessories. Columbus McKinnon is a global organization headquartered in Charlotte, USA (North Carolina). Its global presence includes offices and manufacturing facilities in North America, Latin America, Europe, Africa and Asia.



[www.cmco.com](http://www.cmco.com)

